

W

The Id a i g e ea eed e e ea eed c ai m e h ha m h a m ga de e lea

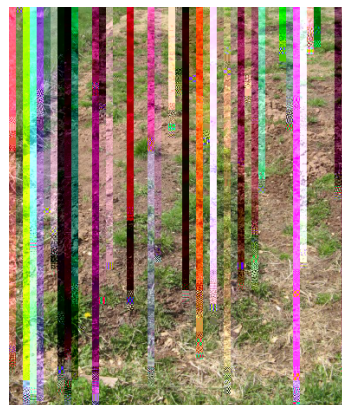
Weeds (some native and some introduced) are remarkably adapted to conditions in the area where they grow, usually much more so than the imported, cultured vegetables we prize so highly for food. Weed seeds may remain viable for those seven (or more) years when conditions are not right for their growth. Then, brought to the surface by tilling and uninhibited by sod, shade, or other factors, they germinate and become pests that take water, nutrients, sunlight, and space from vegetable plants.

Be e cial eed

Ma p a s s d d d s a d a p s a s S r n d s a d p d s r n B M. ES s EM

D s p a s d s s r n s a d s ' a d s a p s R r n r n a d s r n a d p a s s p a I a a d T E M C T s . r n '

a a a r n s d s A r n r n a r n s d a d s a r n a a d d s s d d E p a s s T p a s d a d a s a a d r n d a p p s s p a s a d a s a r n a r n a s d d p a s N A r n a H a r n a d p a s s a a p p d d r n



Start weed control early in the season. The weeds have gotten ahead of this gardener in an early spring!
© R. Campbell, Dalhousie.

W d s a a a a s s s r n a a a a d T p d s p a d a a s a d p d a s a d p s s s a s s a d a s p s s.

C l i a i

W d s a a s s l p d r n a a s r n a s r n s p . Ma a r n a s r n s r n s s a a d s s s a d d s a p d d a d a d d a a d s r n s a r n a d a a a p a s F a p s s r n d s a d a a s p r n s H a s s p a n p a . As n r n s a a a d a d r n s s j .

T a s a a s d a d r n s p r n a s S r n d s a a a s r n s a d s r n s s r n a a d a s r n d s a a d d . Ha d p a d d a a s r n a d s a d a s d d s T s a s p a s s a p a . T a a s r n a p d a a s a d a d j r n s a d p a a s a s s s s d a d d s a s p a l a a d s a a

a p p a s r a s a s a d i a s .
 H r a a a d i a a s
 a s a a d i d s a a
 s a p a s d a r a
 a s . H a d i p a a
 s s r d s a a p a s .
 A d i d i p a a s r s s
 d a r a s s r p a s .
 T d i d s s p a
 p d i s a r a s . H a d i p d i
 d s p r a s a s s r a
 a d i p s d i a d i a
 a s a r a . H a s p d i d i
 a a a d a ' s s
 d s a d a d i r r s p . R a
 a s s a d i s a d i s r d s
 s .
 l d s a s a d i s d i a r r
 a d i s a d i d i a . A s r s
 r a d i s d s d s p d s ' a
 p a d s a a d i d . G a s s a
 s p a d i d i r r s s a s
 p s a p r d d r p . l
 s a s d i s p a a a s a
 r a a s p a r r a d i
 . R d i d i a d i a d i
 r r r a s a s p p
 s p a d i s a d s d s a d i a a .

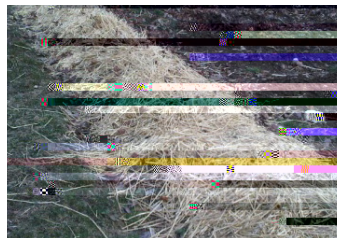


These weeds have been left to die in the sun. Remember that they can quickly re-grow in the right conditions!
 © R. Campbell, Dalhousie.

C a s s d s s s r a
 r s . W s a
 s s p a a s s . W s
 d d s a d i p a d i s a s a d i .
 A d a a a a s p a
 s r a .

M l c h i g

M a a a a d
 a a a s r r r a s . T
 a s a r r r s a a
 d s a d s s a
 s a s d . B a p a s r a a
 s p a . F p a a s s p a
 a d a d s r a a s d
 s a d s d i p s p d
 s p p s s . H s a d s d i p s a
 r r d i d i s a d i p a s . F r
 r a s s ' M ' s
 s .



Straw is an effective mulch for annual weed control. © Tracy Kittilsen, Dalhousie.

O h e i

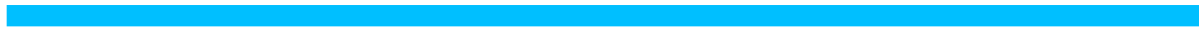
CLOSE SPACING: l a s a p a d
 s a s a d s
 a d i p r a d s d i s .
 T s s a d i a p a d i a s d i
 d i p a s a s a d i s a
 a d i a p a s s a d i r a s d a p
 p a s a r a .

NO-TILL: G a d s a a s p r ' r
 a a s ' d s
 a a ' p r a . P a d s a r r d a d i
 a a r r d i d a s d a d i a ' s
 a . V a s a p a d a d a a
 r r s p d a j s a s p a s a d
 s d i s p s d . A d d i a r r s a d d i a s
 r a d i r r s s .

COVER CROPS: T s r p s s a
 s a s s a s a p a a d i s a
 a s d i p r r . H s r d
 s a a p a a d i d
 a a a a d s p a . C r p s r s a s

The first part of the document discusses the importance of soil health and the role of microorganisms in maintaining it. It highlights how these organisms contribute to nutrient cycling and soil structure. The text emphasizes that a healthy soil ecosystem is essential for sustainable agriculture and food production.

HERBICIDES: The second part of the document focuses on the use of herbicides in crop management. It discusses the different types of herbicides, their modes of action, and the potential risks associated with their use. The text stresses the need for responsible and targeted herbicide application to minimize environmental impact and protect human health.



A

Ge k me c mm eed

This section discusses the importance of soil health and the role of microorganisms in maintaining it. It highlights how these organisms contribute to nutrient cycling and soil structure. The text emphasizes that a healthy soil ecosystem is essential for sustainable agriculture and food production.

Acce e he he f he e li e efe e ce

This section discusses the importance of soil health and the role of microorganisms in maintaining it. It highlights how these organisms contribute to nutrient cycling and soil structure. The text emphasizes that a healthy soil ecosystem is essential for sustainable agriculture and food production.

- Da d
- E P r s
- P s a
- Ba a d G ass
- La r 's Q a s
- A a B ass